

# MAXIMUM PERFORMANCE AND DURABILITY WITHOUT ANY EFFORTS

## 19" TFT Monitor

- intuitive GUI
- Easy to read
- At the right height

## Wheel Cover

- Big capacity, 1150 mm (45") wheel diameter.
- space saving configuration

## Contactless width measurement

- Save time
- Intelligent reading

## USB connection

- Printer report
- Easy sw updates
- Charging function for your devices

## Design

- Small footprint
- Many holders for weight
- Tools and accessories

## Locking system

- Pneumatic locking system, just press the pedal to lock the wheel

## Electro brake

- Hold pedal brake to place the weight
- The wheel is stopped in position

## ALUDATA arm

- The internal gauge is locked in position for a precise weight positioning
- Distance diameter measurement

## Light ring + 3 laser pointers

- 360° Light Ring (Patented) for a perfect view
- 3 laser line pointers for manual weight positioning



# ACCESSORY



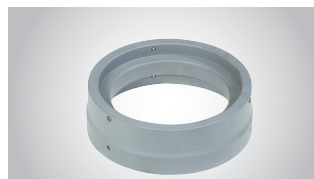
PN: 1 695 654 994

Laser pointer with lighting system



PN: 1695 900 004

Tyre elevator



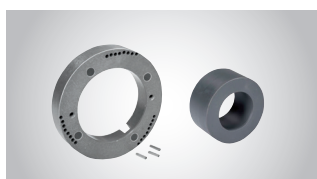
PN: 1695 606 200

Cone spacer



PN: 1695 654 849

Set of light truck cones  
88 – 174 mm



PN: 1695 901 667

Kit of Off-Road cones from the back  
incl. pins (40 mm) distance ring,  
polyamide spacer



PN: 1695 554 043

3-4-5-hole Flange



PN: 1695 655 294

Set of QuickPlates  
(4-, 5-, 6-holes-plates)



PN: 1695 042 875

Printer only for Monitor model



PN: 1695 656 698

DuoExpert system (3 collets in a case,  
54 – 78 mm)



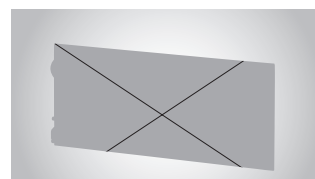
PN: 1695 656 570

Kit demo box for passenger car



PN: 1695 654 039

Basic motorbike wheel centring kit (14  
mm)



PN: 1695 654 060

Monolever wheel centring kit+shaft  
(19 mm)



Sicam S.r.l. Società Unipersonale  
A Bosch Group Company  
Via G. Corradini | 42015 Correggio RE Italy  
Tel. +39 0522 643-311 | Fax +39 0522 637-760  
E-mail: [sales@sicam.it](mailto:sales@sicam.it) | [www.sicam.it](http://www.sicam.it)



- Contactless width measurement
- Measurement cycle in 6.sec
- Quick selection program (QSP)
- LED Light ring/ laser pointers
- Stop On Top
- Electro brake
- ALUDATA Arm
- NEW! Automatic Spokes Detection function (ASD)
- NEW! Optimization Static & Dynamic function (OSD)

# SBM 265/V765

WHEEL BALANCING WITH COMFORT



# SBM 265/V765

## ALLROUNDER WITH COMFORT AND HIGH PERFORMANCE

The SBM 265/V765 are fast and robust wheel balancers designed for high wheel service volume workshops. The new models are able to conduct a measurement cycle in just 6 sec. and balance wheels with a diameter of 1150 mm and weighing up to 80 Kg. The ergonomic design allows a better access inside the wheel making operations easier. The quick selection program (QSP), the ALUDATA arm for a precise weight positioning, the stop in position of the wheel and the automatic contactless width measurement, make these balancers a benchmark for the market. Thanks to the new feature the user should not worry to measure the width of the rim, the machine will do it automatically!

**BOTH MACHINES PROVIDE A PERFECT VIEW INSIDE THE RIM AND  
EASY WEIGHT POSITIONING – WITHOUT ANY EFFORTS:**

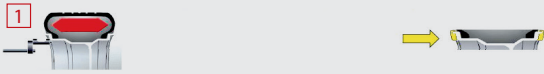
- ALUDATA arm for precise weight positioning
- 3 laser line pointers for manual weight positioning
- LED light ring (patented) for the perfect view inside the rim
- Many holders for weights and tools with easy access.

### **HIGHLIGHTS:**

- Automatic Contactless width measurement
- QSP to select the top 3 balancing programs by using the ALUDATA arm
- 6 seconds for the balancing cycle
- Electronic brake
- Pneumatic locking system (P variant)
- Stop on Top function to stop the wheel in the right position
- Connectivity: USB charging / printer connection
- Customizable screen saver
- Height of Monitor (19") for a perfect view and access the controls
- SBM 265 additionally supplied with brilliant digital LED colour display
- Print Report: possibility to print a balancing report

# SPECIAL FUNCTIONS

Acquisition in one step: one position >> standrad program, both clip weight



Acquisition in two step: two position >> Alu3 program, clip & adhesive weight



Acquisition in three step: three position >> Alu2 program, both adhesive weight



## QUICK SELECTION PROGRAMM (QSP):

Function to select automatically the 3 main weight programs used: Standard, Alu3 and Alu2 program.

- Alloy rims: Adhesive weights
- Iron rims: Clip weight
- Combination: Adhesive / Clip weights

With this key feature there is no pre-selection on the keyboard necessary. Just use the gauge lever!

## CONTACTLESS WIDTH MEASUREMENT:

- Automatic width measurement
- Time Saving
- Greater Productivity
- Without Efforts
- Intelligent reading
- No more risk of errors from operator side

## LASER LIGHT RING:

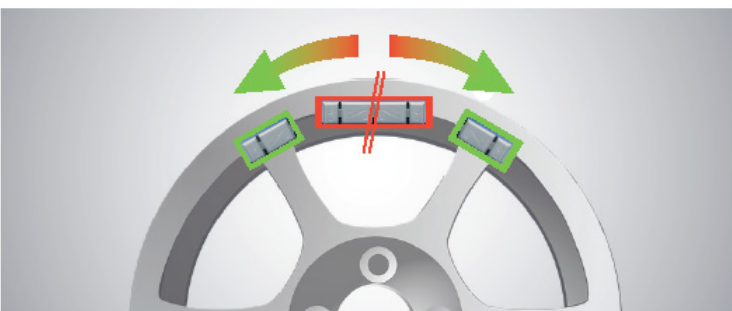
- For a perfect view inside the rim and precise weight positioning

## ASD - AUTOMATIC SPOKES DETECTION (Patent Pending):

- Time saving - no preselection of the number of the spokes by the user necessary
- The machine recognize automatically the spokes number
- Automatic calculation of the balancing adhesive weights
- Included in the scope of delivery (SBM 265/V765)

## OSD - OPTIMIZED STATIC AND DYNAMIC FUNCTION:

- Software for an accurate and faster wheel balancing
- Reduction of the number of the weights around 20%
- Time saving
- Included in the scope of delivery (SBM V765)



# TECHNICAL DATA

	SBM 265	SBM V765
Power supply	230V 1 ph 50/60 Hz	230V 1 ph 50/60 Hz
Balancing speed (50 – 60 Hz)	218 – 262 rpm	218 – 262 rpm
Max wheel weight	80 Kg	80 Kg
Max. wheel diameter	1150 mm	1150 mm
Max. wheel width	500 mm	500 mm
Rim diameter	6" – 40" / 10" – 30" automatic	6" – 40" / 10" – 30" automatic
Rim width	1" – 24 / 1" – 16" automatic	1" – 24" / 1" – 16" automatic
Accuracy	1g/0.05 oz	1g/0.05 oz
Measuring time	6 sec.	6 sec.
Max. dimensions (WxDxH)	1,730 x 1,380 x 1,915 mm	1,730 x 1,380 x 1,915 mm

## SCOPE OF DELIVERY:

- SBM 265/V765
- 19" TFT-Monitor / Double Digital LED Display
- Wheel protection
- Centering flange respecting the model (mechanic or pneumatic)
- Cones:
  - 3 cones for mechanical locking system
  - 4 cones for pneumatic locking system
- Weight plier
- Compass
- Calibration weight
- Operation manual with CE certification
- Weight scraper
- Rim protection – quick nut
- Light ring with laser pointers (V765)

## SOFTWARE LANGUAGES – MONITOR MODEL:

Italian, French, English, German, Spanish, Portuguese, Czech, Polish, Hungarian, Slovenian, Dutch, Serbian, Finnish, Turkish, Croatian, Swedish, Lithuanian, Russian, Israeli an, Bulgarian, Slovak, Danish, Persian, Japanese, Icelandic, Chinese and Korean