



22" and 20" External Clamping  
G-Frame rigidity  
Simple and reliable  
Side Lift NG

# FALCO EVO 600S-620S

TILTING BACK TIRE CHANGERS

Image shown above is indicative only..

# FALCO EVO 600S- 620S

Falco EVO 600S and Falco EVO 620S are pneumatic tilting back pole passenger car tyre changers.

Falco EVO 600S is equipped with a 20" (external clamping) single speed turntable while Falco EVO 620S is equipped with a 22" double speed turntable; both have pneumatic mounting/demounting head locking and pneumatic bead breaker.

Installation of the Tecnoroller NG helper system enables exceptionally quick, easy mounting and demounting of any kind of tyre, even the most difficult UHP or RFT types.

Both tire changers can be equipped with the new Side Lift NG, providing an ergonomic working position at all times.

Falco EVO 600S and Falco EVO 620S are ideal for high performance without sacrificing comfort.

They are specifically designed for medium volume workshops.

## HIGHLIGHTS

### **Stability and strength**

New G-frame concept with new, additional structural elements for improved strength. The bead breaker and the base of the pole are welded to the body to improve its strength and solidity over time

### **Flexibility**

Able to process any kind of car, light commercial vehicle and motorcycle (with special accessory kit) wheels: max wheel diameter 1100 mm and max wheel width 11".

### **Safety**

Plastic pole protection with integrated holders for tools and valves.

### **Easy to use and fast**

- Inflating system controlled by gun with manometer [bar/psi]
- Tubeless inflating system directly mounted in the turntable jaw, controlled by side pedal allowing a stronger air flow (only for Falco EVO 600S IT and 620S IT models)
- Bead breaker shape designed to protect the rim from risk of scratches
- Tecnoroller NG mounting and demounting helper arm with 2 independent pressing points
- Second speed with pedal selection (FALCO EVO 620S)
- New pull-out pedal unit for quick, convenient maintenance
- "SIDE LIFT" available as accessory for all models, maximum comfort and ergonomics.



# TECHNICAL DATA

| CATION RANGE                | FALCO EVO 600S  | FALCO EVO 620S  |
|-----------------------------|---|---|
| Mains connections           | 3 Ph - 400 V 50 - 60 Hz<br>3 Ph - 230 V 50 Hz<br>1 Ph - 230 V 60 Hz<br>1 Ph - 110 V 60 Hz | 1 Ph - 230V 50 - 60 Hz<br>3 Ph - 400 V 50 - 60 Hz<br>3 Ph - 230 V 50 - 60 Hz<br>1 Ph - 110V - 60 Hz |
| External clamping           | 10" - 20"   | 10" - 22"   |
| Internal clamping           | 12" - 23"   | 12" - 24"   |
| Rim width                   | 3" - 11"  | 3" - 11"  |
| Max. wheel diameter         | 1100 mm   | 1100 mm   |
| Bead breaker range          | 65 - 305 mm   | 65 - 305 mm   |
| Air connection              | 8 - 10 bar  | 8 - 10 bar  |
| Rotation speed              | 7,5 rpm   | 7,5 - 15 rpm  |
| Dimensions max. (H x D x W) | 1960 x 1660 x 1270 mm   | 1960 x 1660 x 1350 mm   |
| Pole folded                 | 1860 x 1660 x 1800 mm (V1)  | 1860 x 1660 x 1950 mm (V1)  |
| Net weight                  | 223 kg  | 230 kg  |

## SCOPE OF DELIVERY

- 1x Bead lever
- 1x Lubricant brush
- 1x Inflating gun system with pipe connections



20" turntable



22" turntable





# ACCESSORIES



PN: 1695 101 402

Jaw plastic protection kit  
(for FALCO EVO 600S)



PN: 1695 101 502

Jaw plastic protection kit  
(for FALCO EVO 620S)



PN: 1695 101 608

Protective wing kit for mounting/  
demounting head



PN: 1695 102 725

Protective wing for mounting/  
demounting head



PN: 1695 106 152

Plastic guard for bead breaker tyre/  
rim protection



PN: 1695 105 191

Plastic protection for rim



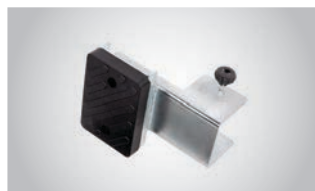
PN: 1695 103 211

Plastic mounting/demounting head  
kit (with adapter)



PN: 1695 102 584

Accessory storage case



PN: 1695 101 518

Bead breaking spacer for motorbike  
wheels



PN: 1695 103 210

Motorbike mounting/demounting  
head kit



PN: 1695 103 542

Scooter adapter kit  
(for FALCO EVO 600S)



PN: 1695 103 543

Kit adattatori moto/scooter  
(per Falco EVO 600S)



PN: 1695 101 575

Motorbike/scooter adapter kit  
(for FALCO EVO 620S)



PN: 1695 106 190

Roller board



PN: 1695 108 913

External tubeless inflating device



PN: 1695 903 403

Tecnoroller



PN: 1695 108 871

Mounting/demounting lever (WDK  
model)



PN: 1695 103 261

Bead pressing device (thin)



PN: 1695 103 216

Bead pressing device (thick)